

1.4 AcC

112.63'

58.59'

SAINT JAMES STREET (L)

STREET (L)

FEDERAL STREET (L)

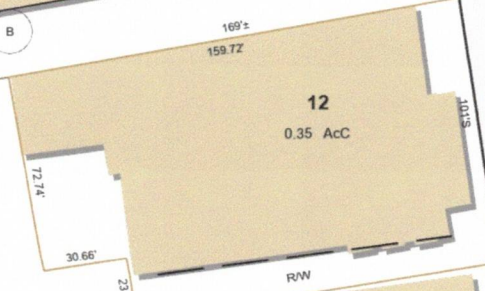
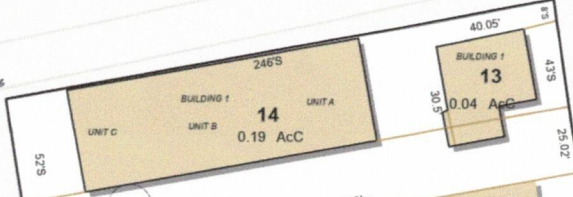
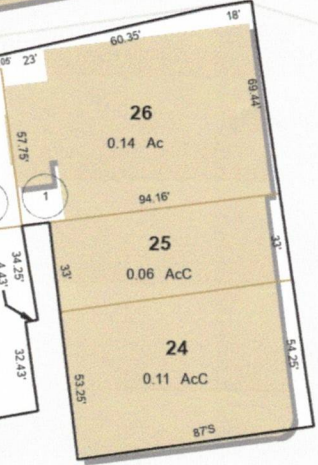
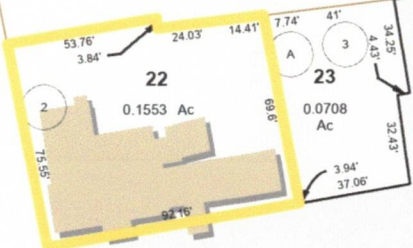
LAMSON STREET (L)

STREET (L)

MAIN STREET (L)

STREET (L)

GKBO AVE.



10
1.9 Ac

8
0.37 Ac

COMMERCIAL

STREET (L)

BUILDING 1

R/W

A

B

2

1

3

A

2

2

68'S

74.45'

18.4'

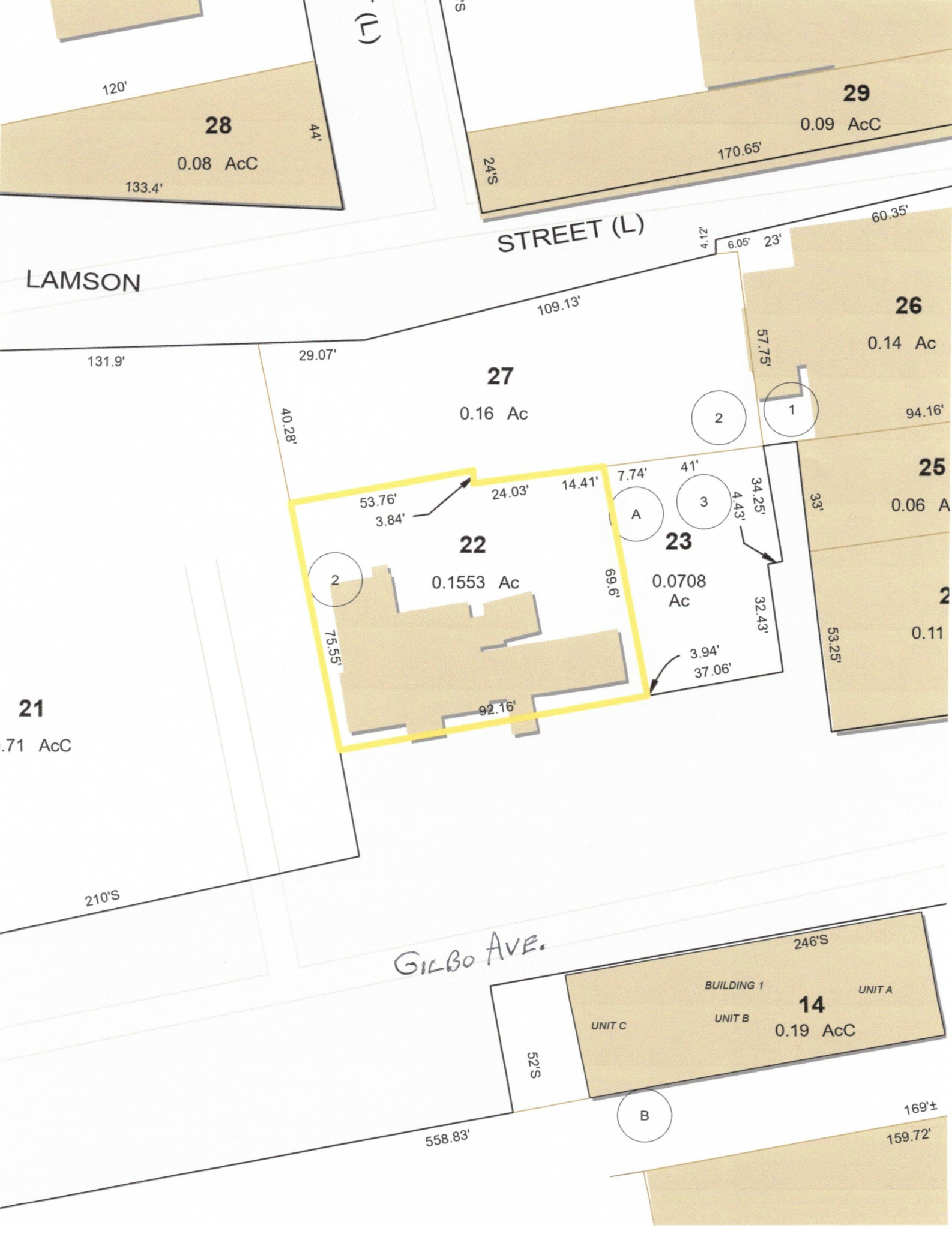
47.08'

101.18'

25.02'

43.9'

8.5'



LAMSON

STREET (L)

GILBO AVE.

120'

28

0.08 AcC

133.4'

44'

29

0.09 AcC

170.65'

24'S

60.35'

4.2'

6.05' 23'

26

0.14 Ac

57.75'

94.16'

109.13'

27

0.16 Ac

29.07'

40.28'

131.9'

2

1

25

0.06 A

33'

53.76'
3.84'

24.03'

14.41'

7.74'

41'

34.25'

4.43'

22

0.1553 Ac

2

75.55'

23

0.0708 Ac

69.6'

32.43'

3.94'
37.06'

2

0.11

53.25'

21

.71 AcC

210'S

246'S

BUILDING 1

UNIT A

14

0.19 AcC

UNIT C

UNIT B

52'S

B

558.83'

169'±

159.72'